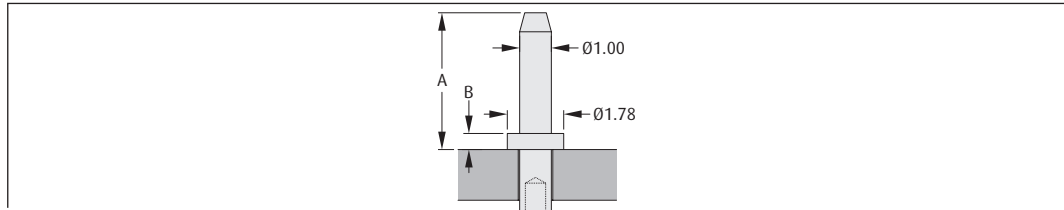
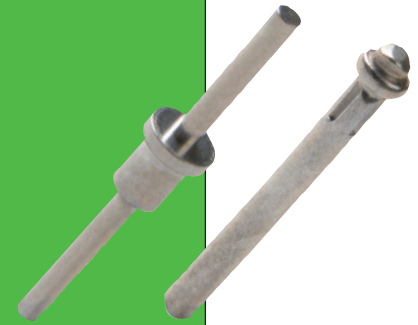


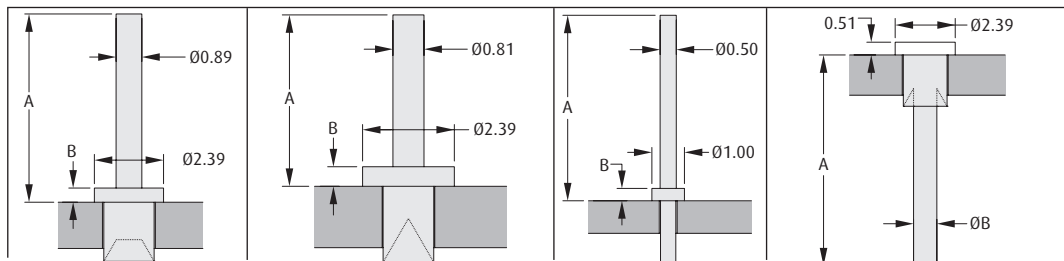
# PCB Terminals

## Turned Terminals

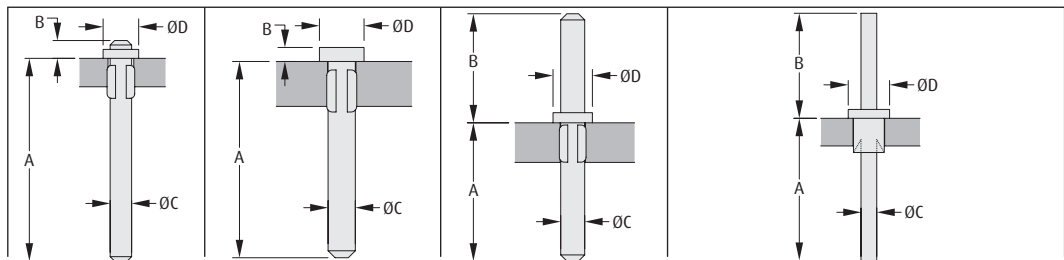
- Material: brass with tin plating.
- For swaging tool change order code to prefix Z and suffix 00 (example Z2174-00).
- Contact [technical@harwin.com](mailto:technical@harwin.com) for alternative finishes and custom designs.



ORDER CODE	H2174-01	H2175-01	H2173-01	H2176-01	H2170-01
A	4.32mm	4.90mm	8.13mm	9.53mm	13.21mm
B	0.51mm	0.35mm	0.51mm	0.51mm	0.51mm
PANEL THICKNESS	1.6mm	1.6mm	1.6mm	1.6mm	1.6mm
MOUNTING HOLE Ø	Ø1.04-1.14mm	Ø1.04-1.14mm	Ø1.04-1.14mm	Ø1.04-1.14mm	Ø1.04-1.14mm



ORDER CODE	H2101A01	H2105A01	H2106A01	H3108-01	H2101B01	H2105B01
A	6.53mm	4.11mm	4.11mm	5.70mm	8.39mm	6.30mm
B	0.51mm	0.51mm	0.51mm	0.38mm	Ø0.93mm	Ø0.81mm
PANEL THICKNESS	1.6mm	1.6mm	2.4mm	1.0mm	1.6mm	1.6mm
MOUNTING HOLE Ø	Ø1.79-1.87mm	Ø1.33-1.41mm	Ø1.33-1.41mm	Ø0.50-0.55mm	Ø1.79-1.87mm	Ø1.33-1.41mm



ORDER CODE	H2157-01	H3150-01	H3151-01	H2101-01	H2105-01
A	11.40mm	7.00mm	5.59mm	8.23mm	5.05mm
B	1.00mm	0.50mm	4.41mm	6.07mm	4.48mm
C	Ø1.21mm	Ø0.97mm	Ø0.97mm	Ø0.91mm	Ø0.81mm
D	Ø2.00mm	Ø1.59mm	Ø1.59mm	Ø2.39mm	Ø2.39mm
PANEL THICKNESS	1.6mm	1.6mm	1.6mm	1.6mm	1.6mm
MOUNTING HOLE Ø	Ø1.40-1.50mm	Ø0.99-1.04mm	Ø0.99-1.04mm	Ø1.79-1.87mm	Ø1.33-1.41mm

All dimensions in mm.

[www.harwin.com](http://www.harwin.com)

